

Acute Care Wing main entrance takes shape

Update on the KEMH site:

The recently completed first phase of the main entrance forms the principal link in-between the new Acute Care Wing and the Continuing Care Unit (CCU). Behind that, hidden from general view, is the link corridor which connects the new and existing buildings.

The retaining wall in front of CCU is complete, which has allowed progress to be made with the roads and pathways parallel to Point Finger Road. The large excavation at the southern end of the site is for the new underground sewage treatment plant. This process will biologically treat all of BHB's effluent and remove solid waste.

Most of the windows and screens have now been fitted into the envelope of the building making it substantially watertight. A vapour barrier has been applied to the concrete walls and is now being covered with insulation prior to the final render coatings being applied.

All the windows are rated as hurricane proof, but to ensure they met the grade in their fitted position they were recently tested. The tests revealed that the Acute Care Wing is robust enough to perform as a disaster recovery building in the event of severe weather conditions.

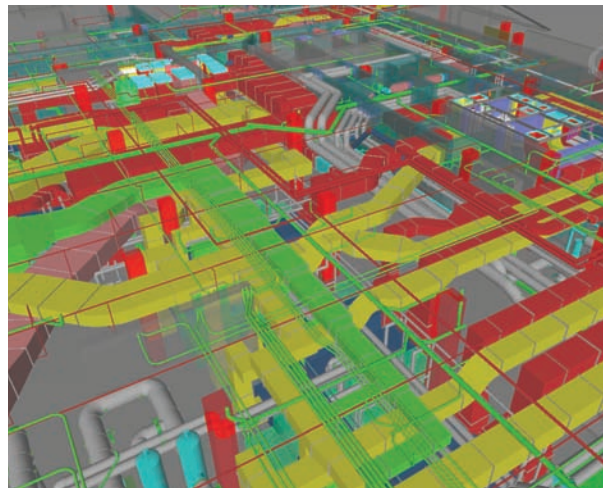
In order to create a stable environment for the installation of the final finishes and medical equipment, a temporary "conditioned air" system has been installed to control the internal temperature and relative humidity levels. The form of the internal room layouts is now very evident, as the drywall installations move into their final phase, particularly in the new Emergency Department and the three ward levels where the floor laying activities are due to start next month.

Utility installations are well underway and are being carried out by local specialist subcontractors, who now account for nearly 75 percent of the site workforce.

Revitalising KEMH

In its commitment to redevelop the existing KEMH building to the same standards as the new Acute Care Wing, BHB has approved the Utilities Interface Project. The project links the mechanical infrastructure of the existing KEMH building to the Acute Care Wing. The new wing will provide the existing facility with the following services:

- steam
- chilled water for air-conditioning
- hot water for heating systems
- potable water
- water for firefighting - sprinklers and stand pipes
- medical gases



Computerised building information modelling has been used to coordinate the installation of the various utility works in the new wing.

The electricity feed will continue to be a direct link, independent of the new wing.

KEMH is now making the necessary preparations and adjustments to receive the utilities next March. Detailed design and construction requirements are being collated and the project is targeted to be put out to tender in August. The contract will be awarded in the Fall and construction is targeted to start before the end of the year.



Aerial view of phase one of the Acute Care Wing entranceway.



Phase one of entranceway works underway.



Single patient suite



Bermuda Hospitals Board
KEMH Redevelopment Project

Watch our progress. Please visit our website at www.bermudahospitals.com and click on the KEMH Redevelopment Project button on the homepage.